



**Janseva Foundation Loni Budruk**  
**Arts and Commerce College, Shendi (Bhandardara)**

**At.-Chichondi, Tal.-Akole, Dist.-Ahmednagar (MS) 422604**

**NAAC Accredited 'B+' Grade**

**Unipune ID- PU/AN/AC/93/2007 Email- [principal.acshendi@pravara.in](mailto:principal.acshendi@pravara.in)**

Website : [www.acscollegeshedi.in](http://www.acscollegeshedi.in)



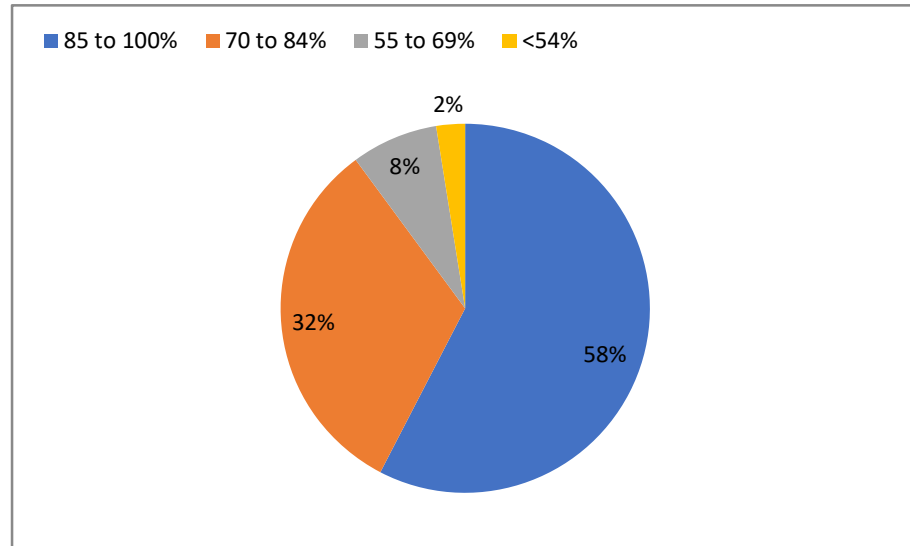
## **Overall Report of Student Satisfaction Survey**

The following is an analysis of the survey responses received for the Student Satisfaction Survey: Maximum students feel that the teachers complete the syllabus well in time and come satisfactorily prepared to class and their communication skills are always effective. Most of the students feel the teacher's approach and attitude of teaching the topic is very good. The concepts taught are always well supplemented with added knowledge, examples and repetition as and when required. Most students agree that the institution involves the students in the quality of teaching learning process. Most students feel that maximum number of teachers use ICT tools to enhance the teaching-learning process and the teaching-learning modules are very good. Many of the students feel that the evaluation process of the unit's test and assignments is always fair and there is a proper feedback system in place where the teachers always discuss with the students their performance and take regular follow-up of assigned tasks. Maximum students feel that the teachers always identify their strengths and weaknesses and encourage them to improve further. Most of the students are of the opinion that they adequately encouraged participating in the co-curricular activities organized by the staff of the college. Maximum students feel that the teachers satisfactorily aid and help in providing a holistic development through the mentoring system and proper guidance. Maximum students are of the opinion that they are encouraged to participate in extra-curricular activities. A large number of students agree that the college provides them with a platform to grow while learning. Maximum students feel that their learning is moderately enhanced by the use of student-centric approaches and that they are usually made aware of the competencies required and the learning

outcomes of a particular program that they are completing. Most of the students feel that the teachers make effort in inculcating skills and try to make them job ready globally. The questionnaire has been framed based on multiple aspects of the college that can help the management to streamline services. The result of this survey is based on the response of 158 students. The responses given by the students for the questionnaire provided to the students are given below.

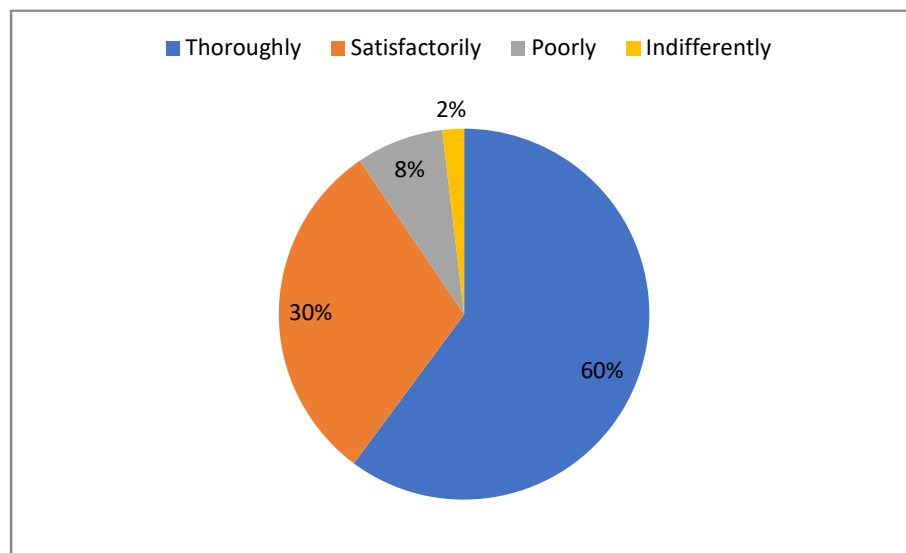
### 1. How much of the syllabus was covered in the class?

Response	85 to 100%	70 to 84%	55 to 69%	<54%
No. of Students	91	51	12	4
In %	58	32	8	3



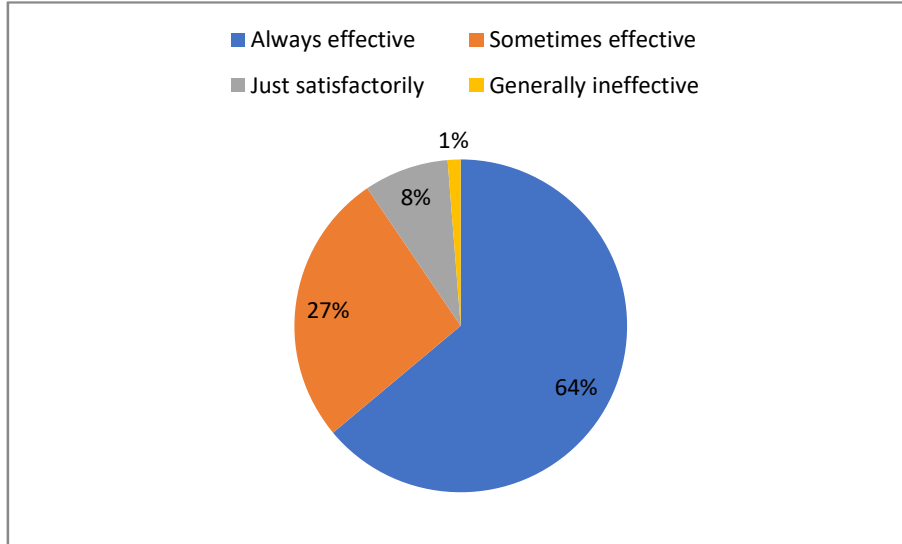
### 2. How well did the teachers prepare for the classes?

Response	Thoroughly	Satisfactorily	Poorly	Indifferently
No. of Students	95	48	12	3
In %	60	30	8	2



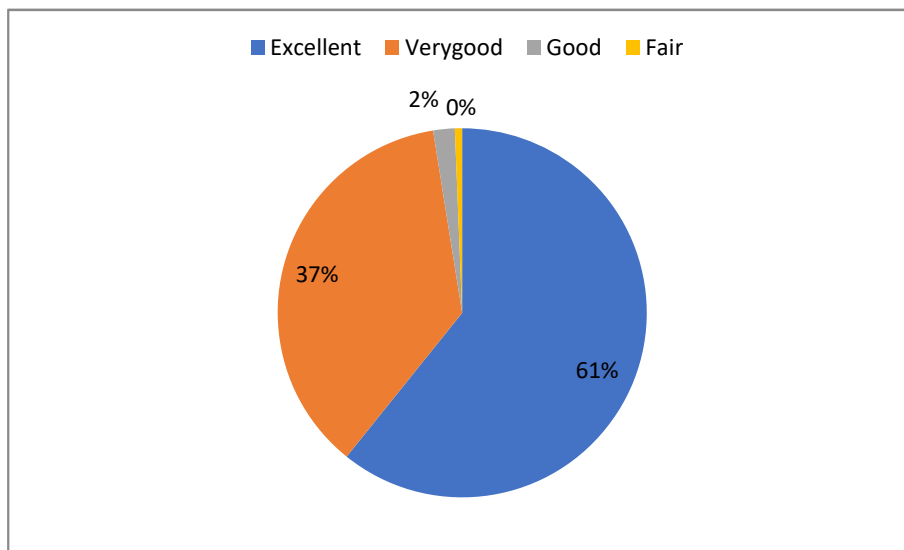
### 3. How well were the teachers able to communicate?

Response	Always effective	Sometimes effective	Just satisfactorily	Generally ineffective
No. of Students	101	42	13	2
In %	64	27	8	1



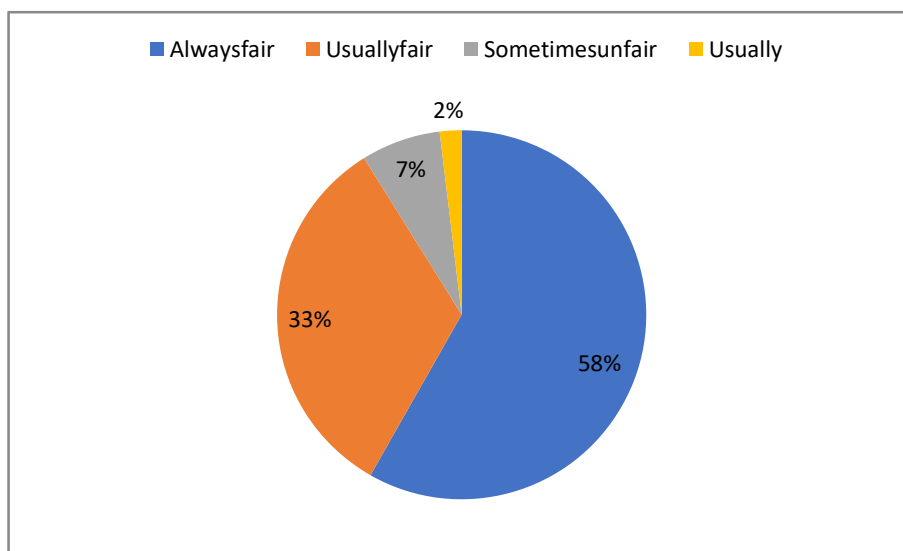
### 4. The teacher's approach to teaching can best be described as

Response	Excellent	Verygood	Good	Fair
No. of Students	96	58	3	1
In %	61	37	2	1



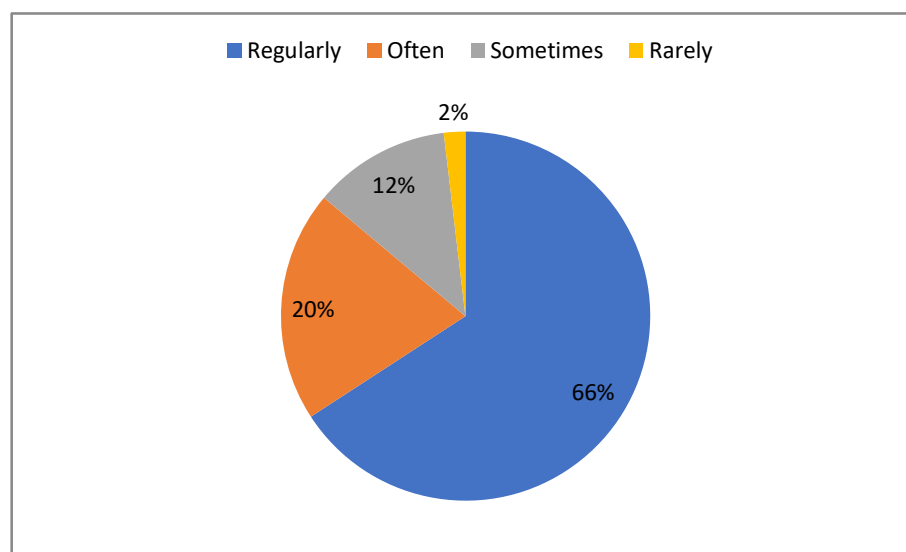
**5. Fairness of the internal evaluation process by the teachers.**

Response	Alwaysfair	Usuallyfair	Sometimesunfair	Usually
No. of Students	92	52	11	3
In %	58	33	7	2



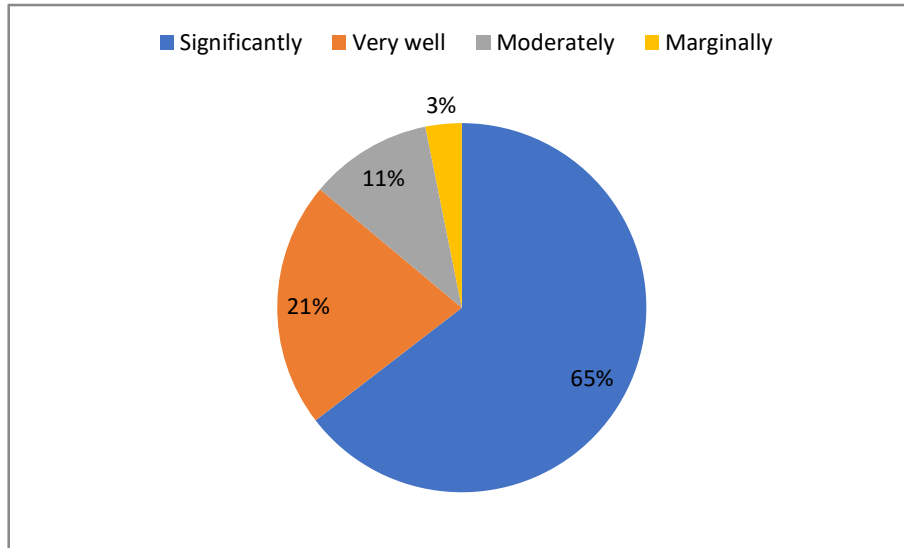
**6. The institute takes active interest in promoting internship, student exchange, field visit opportunities for students.**

Response	Regularly	Often	Sometimes	Rarely
No. of Students	104	32	19	3
In %	66	20	12	2



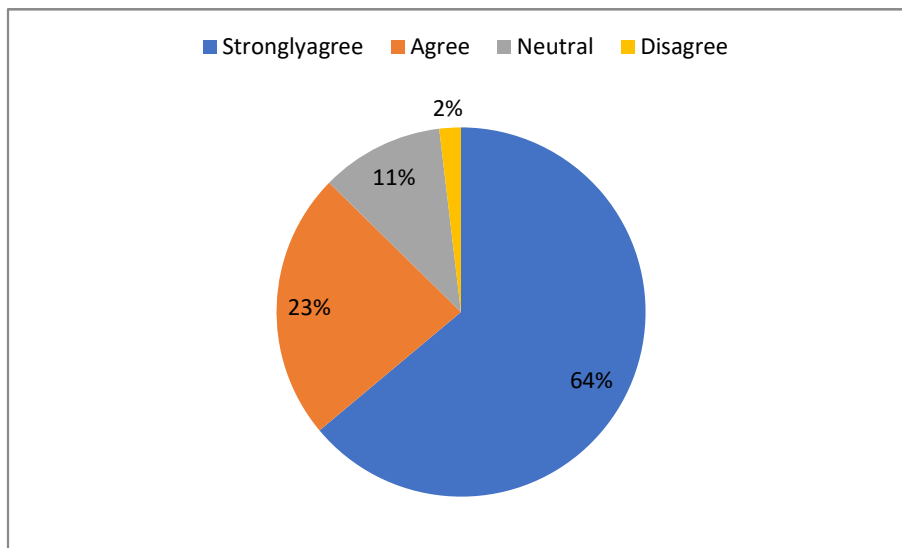
**7. The teaching and mentoring process in your institution facilitates you in cognitive, social and emotional growth.**

Response	Significantly	Very well	Moderately	Marginally
No. of Students	102	34	17	5
In %	65	22	11	3



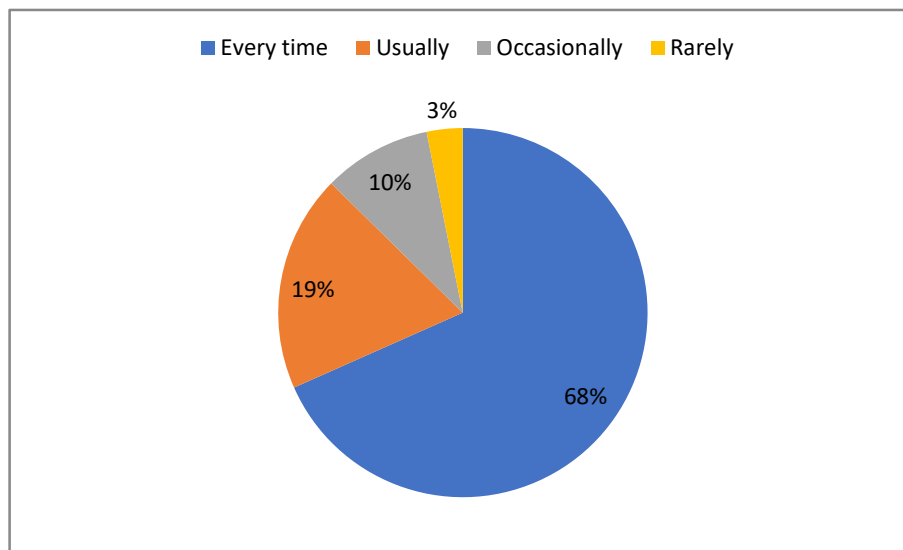
**8. The institution provides multiple opportunities to learn and grow.**

Response	Stronglyagree	Agree	Neutral	Disagree
No. of Students	101	37	17	3
In %	64	23	11	2



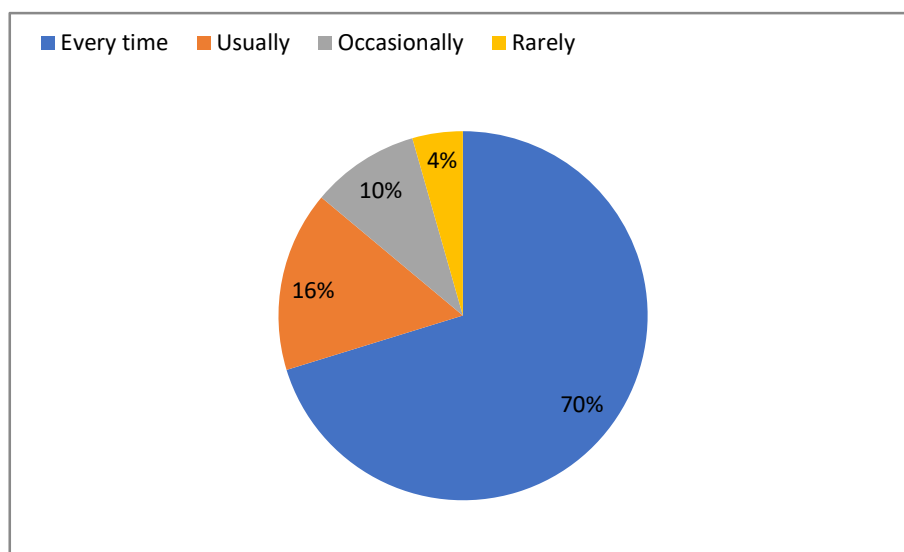
**9. Teachers inform you about your expected competencies, course outcomes and programme outcomes.**

<b>Response</b>	Every time	Usually	Occasionally	Rarely
<b>No. of Students</b>	108	30	15	5
<b>In %</b>	68	19	9	3



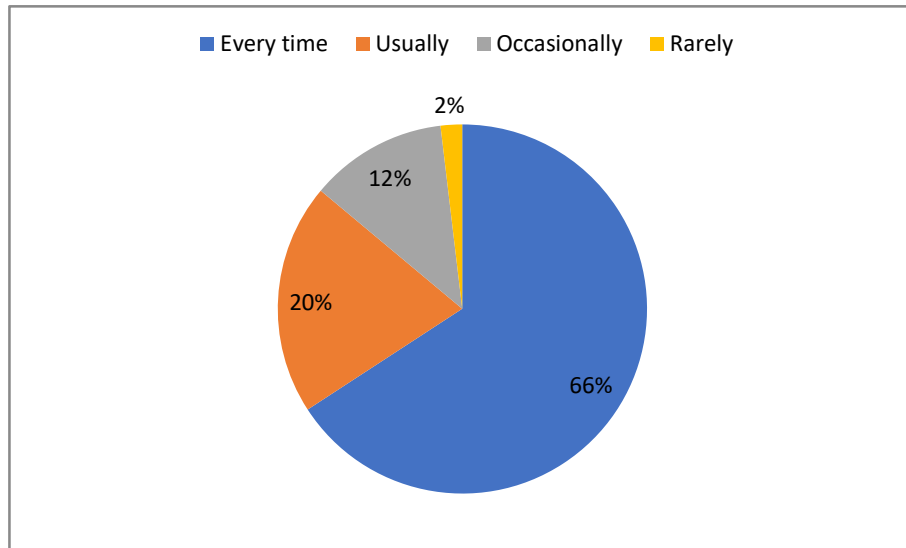
**10. Was your performance in assignments discussed with you?**

<b>Response</b>	Every time	Usually	Occasionally	Rarely
<b>No. of Students</b>	111	25	15	7
<b>In %</b>	70	16	9	4



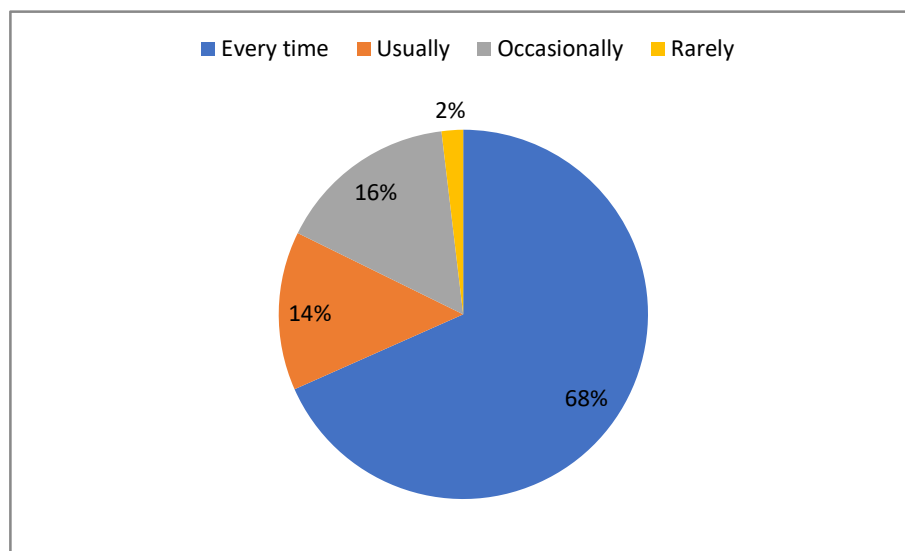
**11. Your mentor does a necessary follow-up with an assigned task to you.**

<b>Response</b>	Every time	Usually	Occasionally	Rarely
<b>No. of Students</b>	104	32	19	3
<b>In %</b>	66	20	12	2



**12. The teachers illustrate the concepts through examples and applications.**

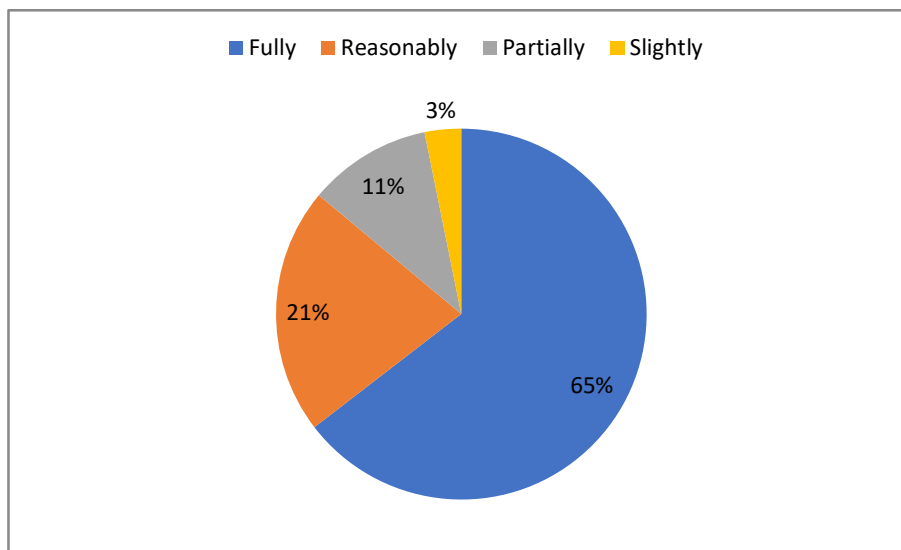
<b>Response</b>	Every time	Usually	Occasionally	Rarely
<b>No. of Students</b>	108	22	25	3
<b>In %</b>	68	14	16	2





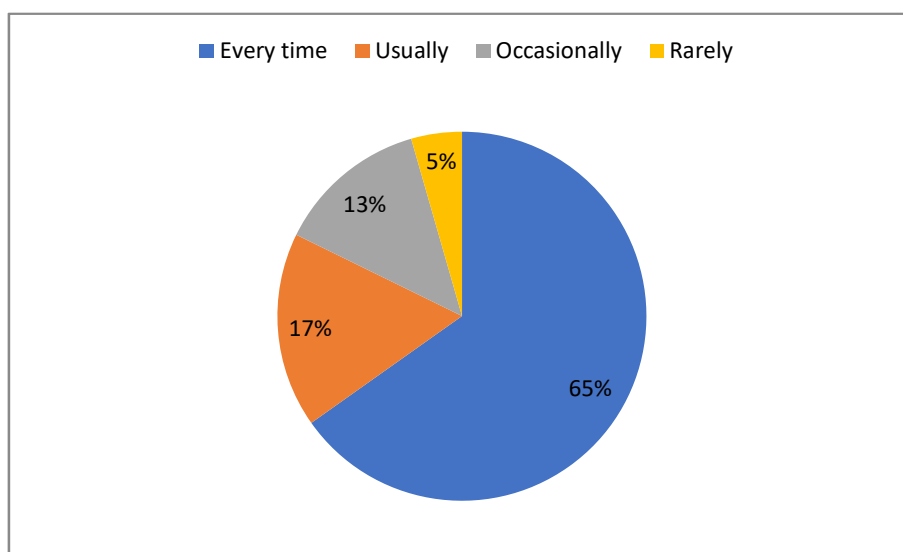
**13. The teachers identify your strengths and encourage you with providing right level of challenges.**

Response	Fully	Reasonably	Partially	Slightly
No. of Students	102	34	17	5
In %	65	22	11	3



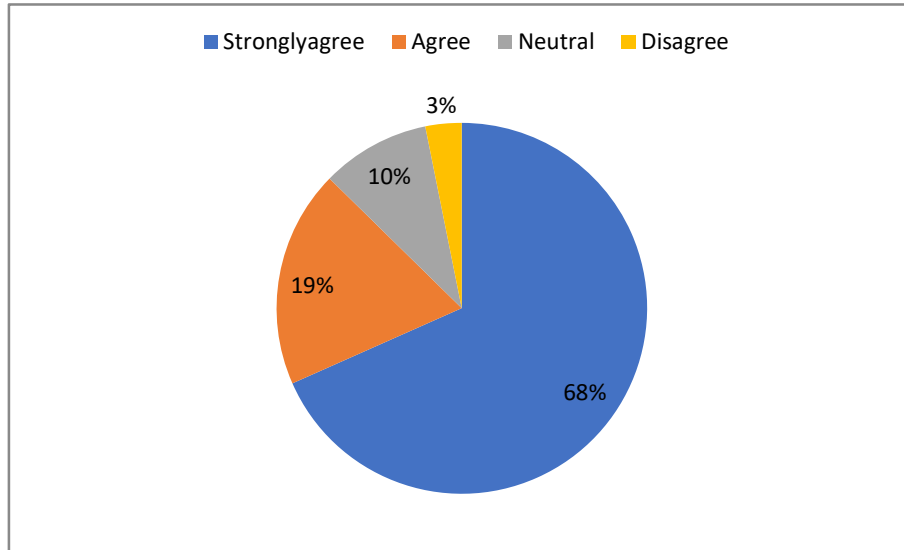
**14. Teachers are able to identify your weaknesses and help you to overcome them. Every time**

Response	Every time	Usually	Occasionally	Rarely
No. of Students	103	27	21	7
In %	65	17	13	4



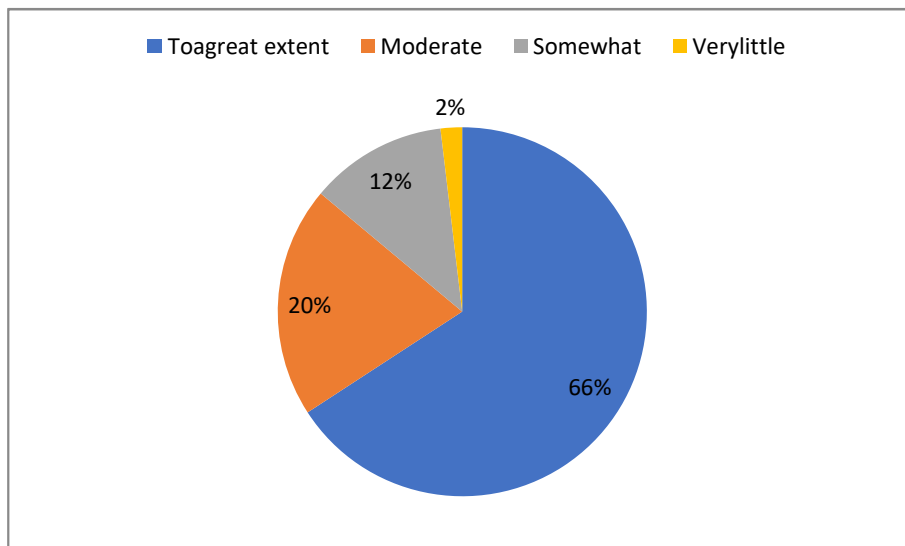
**15. The institution makes effort to engage students in the monitoring, review and continuous quality improvement of the teaching learning process.**

Response	Stronglyagree	Agree	Neutral	Disagree
No. of Students	108	30	15	5
In %	68	19	9	3



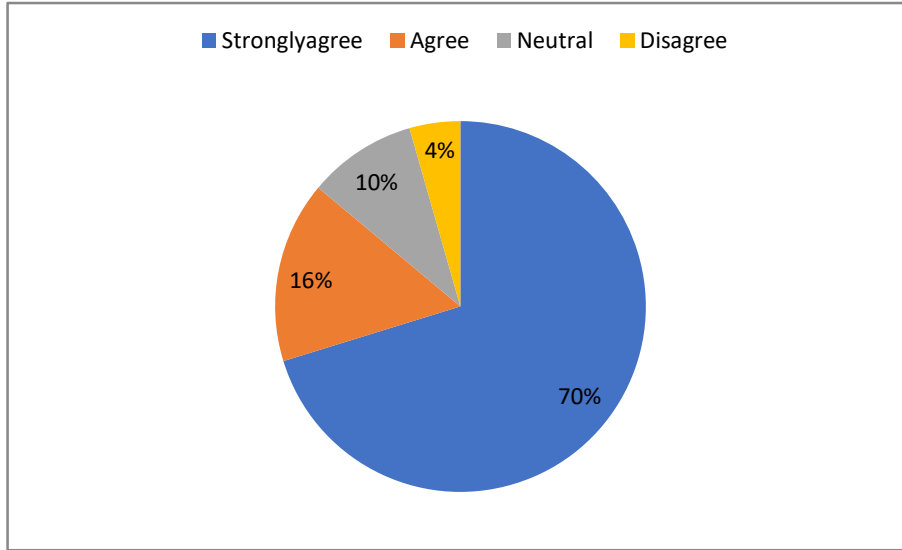
**16. The institute/ teachers use student centric methods, such as experiential learning, participative learning and problem solving methodologies for enhancing learning experiences.**

Response	Toagreat extent	Moderate	Somewhat	Verylittle
No. of Students	104	32	19	3
In %	66	20	12	2



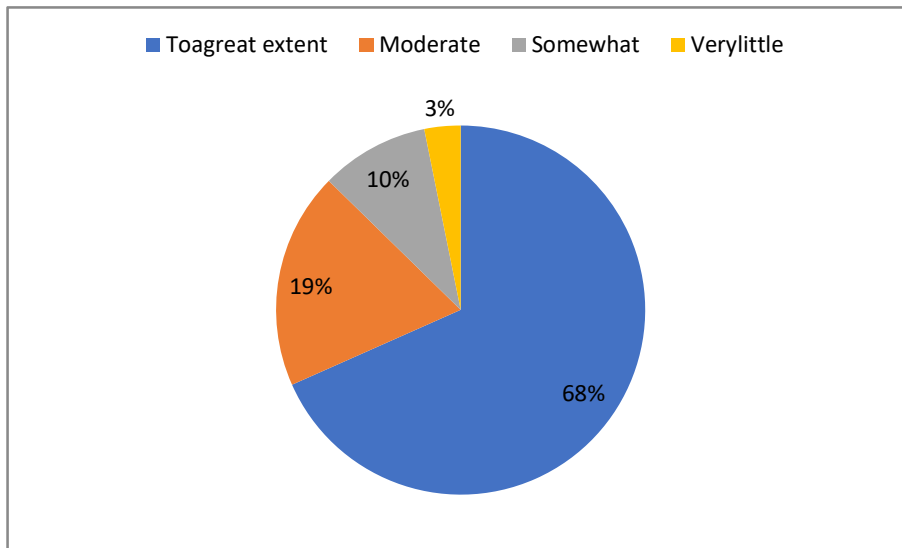
**17. Teachers encourage you to participate in extra curricular activities. 4-Strongly agree**

Response	Stronglyagree	Agree	Neutral	Disagree
No. of Students	111	25	15	7
In %	70	16	9	4



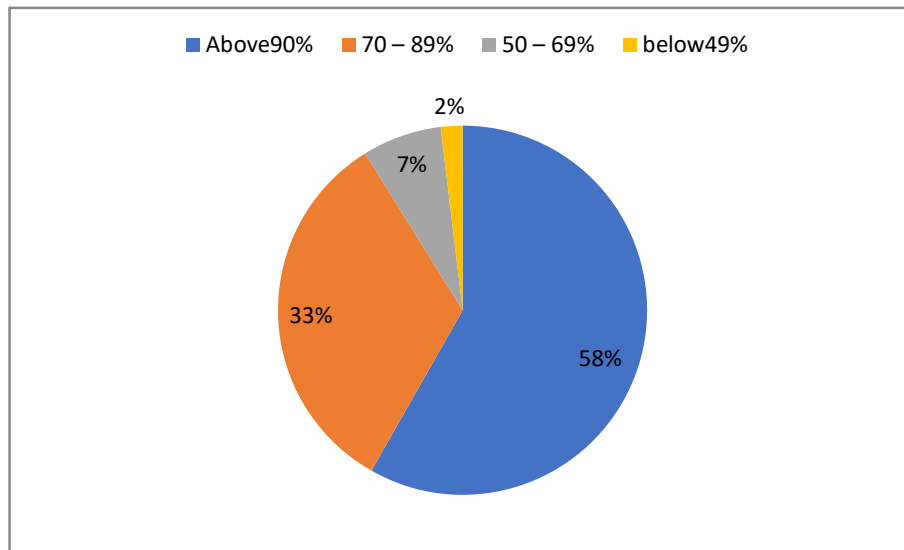
**18. Efforts are made by the institute/teachers to inculcate soft skills, lifes kills and employ ability skills to make you ready for the world of work.**

Response	Toagreat extent	Moderate	Somewhat	Verylittle
No. of Students	108	30	15	5
In %	68	19	9	3



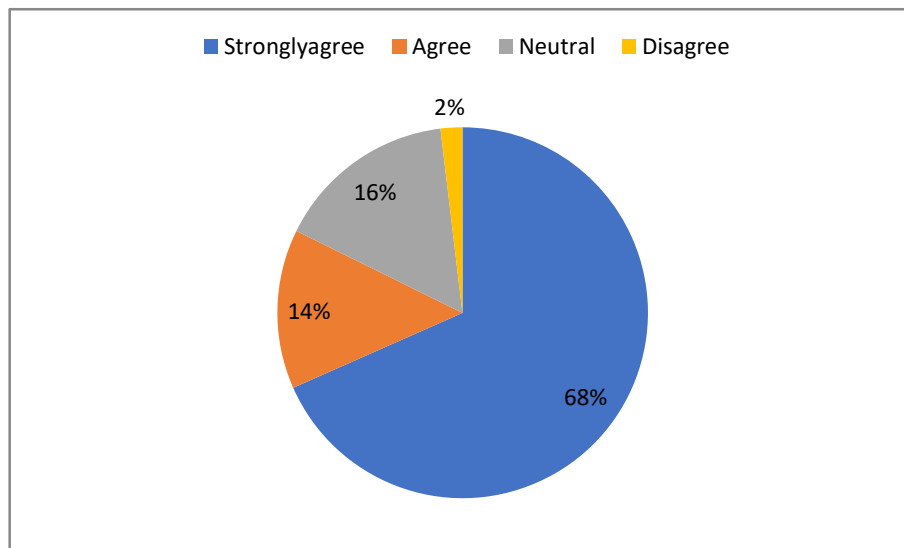
**19. What percentage of teachers use ICT tools such as LCD projector, Multimedia, etc. while teaching.**

Response	Above90%	70 – 89%	50 – 69%	below49%
No. of Students	92	52	11	3
In %	58	33	7	2



**20. The over all quality of teaching-learning process in your institute is very good.**

Response	Stronglyagree	Agree	Neutral	Disagree
No. of Students	108	22	25	3
In %	68	14	16	2



Some of the suggestions made by students :

1. We want to change our blackboard we have lots of difficulty in note down
2. Need more collection of books in library and more specialized teachers in the Department.
3. Motivation for bright students to make them score more



  
**PRINCIPAL**  
Janseva Foundation Loni Bk's  
Art's And Commerce College,  
Shendi(Bhandardara)-422604  
Tal. Akole, Dist. Ahmednagar,